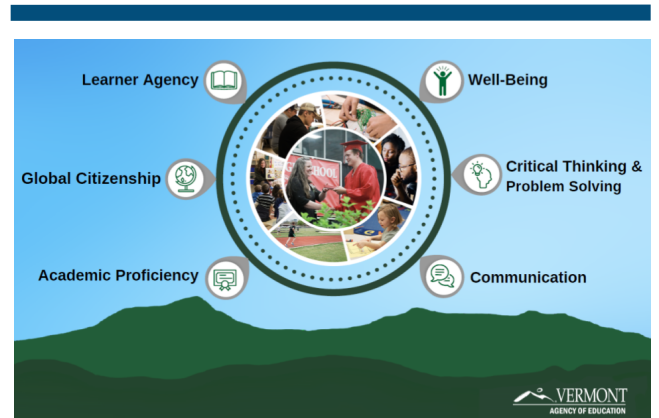


# VERMONT PORTRAIT OF A GRADUATE



ABOUT PORTRAIT OF A GRADUATE . . .

## WHY NOW

Co-creating a vision that expresses a community's collective hopes & dreams for their youth is both challenging & essential. These efforts will help to define the skills, knowledge, & attributes graduates need to be career, college, & citizenship ready. Together, with support from the Agency of Education & Great Schools Partnership, we challenge you to embrace this work for your educators, for your students, for your community.

ABOUT THE PROCESS . . .

## WHAT TO EXPECT

**FEBRUARY:** An in-person, regional convening outlining the process & sharing resources

**MARCH:** Virtual support from GSP in preparing & planning for the community meeting

**APRIL:** Facilitated, in-person community meeting

**MAY:** Virtual support from GSP in processing & analyzing community feedback

**JUNE:** Virtual convening of all participating teams to share portraits

**ON-GOING:** Coaching support & resources

## Portrait of a Graduate Articulates:



### COMMUNITY VISION

Engages community in crafting a vision for meaningful learning opportunities that matter in the local & global context.



### GUIDING COMPASS

Defines skills & understandings that students need to be lifelong learners & contributors to their communities.



### EQUITABLE PROCESS

Creates a robust & culturally responsive vision, one that represents the strengths & assets of the community.



For QUESTIONS: [ewallstrom@greatschoolspartnership.org](mailto:ewallstrom@greatschoolspartnership.org)

Register at: [shorturl.at/qW125](https://shorturl.at/qW125)

