





A Holistic Impact Foundation Platform



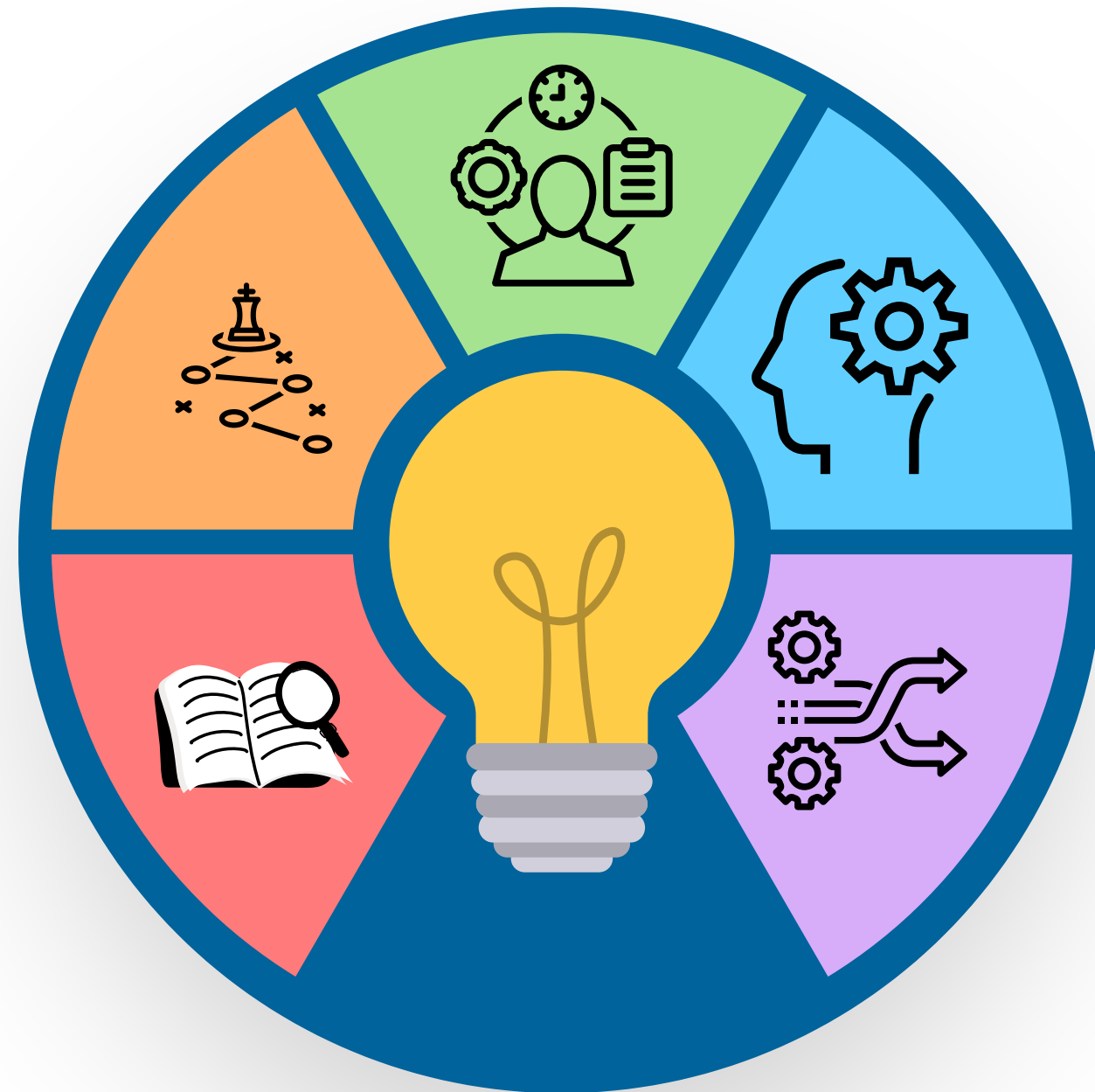
HIF Consulting offers comprehensive services and a holistic approach to problem solving that translates creative thinking into critical action.

We build sustainable outcomes by combining human empowerment, project management, strategic design, and research and analysis. **HIF Consulting** specializes in working in rural areas with: Nonprofits, Schools, Municipalities, and the Arts.



HIF CONSULTING TOOL BOX

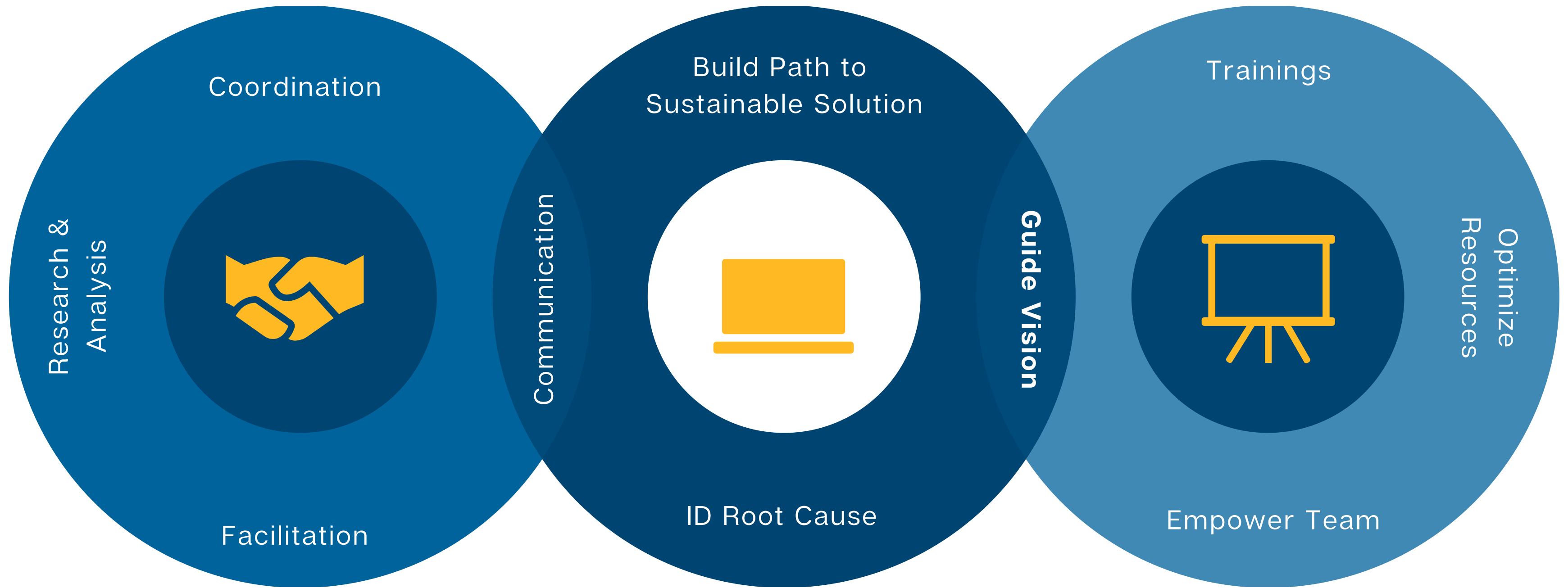
HIF Consulting is uniquely equipped to meet both your immediate needs and drive long-term influence. We provide a tool-box primed to support, enhance, and achieve mission success.



- Research and Analysis**
Deconstruct challenges and evaluate and assess current dynamics within community, leadership/management processes, and areas of improvement.
- Strategic Design**
Apply holistic model of problem solving and strategic design to build strategy meeting immediate needs and creating sustainable impact within the community by coordinating pillars and enhancing leadership/teams.
- Project Management**
Facilitate development and execution of strategy while supporting teams/leaders needed to achieve mission.
- Human Empowerment**
In order to ensure changes and strategic initiatives are sustained, it is imperative to empower the human element behind mission success by supporting teams and leaders. We provide workshops, one on one coaching, and bolster systems connected with human development.
- Change Management**
At the heart of this project is change. We apply our experience in navigating and understanding change to help mitigate challenges and embrace opportunities.

HOW WE HELP.

Strategy Development



Comprehensive Support

Workshops

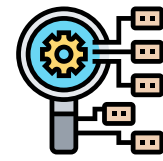
STRATEGIC PROCESS.

Methodical. Efficient. Sustainable.



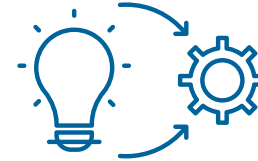
RESEARCH

Deconstruct Challenges and Evaluate Teams, Organization Structure, and Community Dynamics.



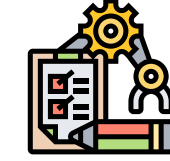
STRATEGY

Build Holistic Strategy Balancing Immediate and Long Term Needs by Enhancing Pillars of Community and Defining Waterville's Vision to Achieve a Sustainable Future.



LAUNCH

Execute Strategy and Methodically Achieve Objectives Leading to Mission Success.



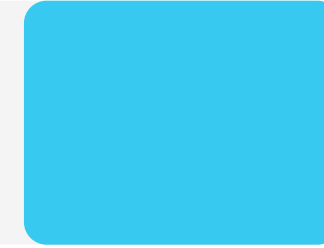
EVALUATION

Sustainable Impact Requires Consistent and Organized Evaluation. We Will Assess Strategy Implementation and Identify Areas of Improvement and Make Necessary Adjustments.

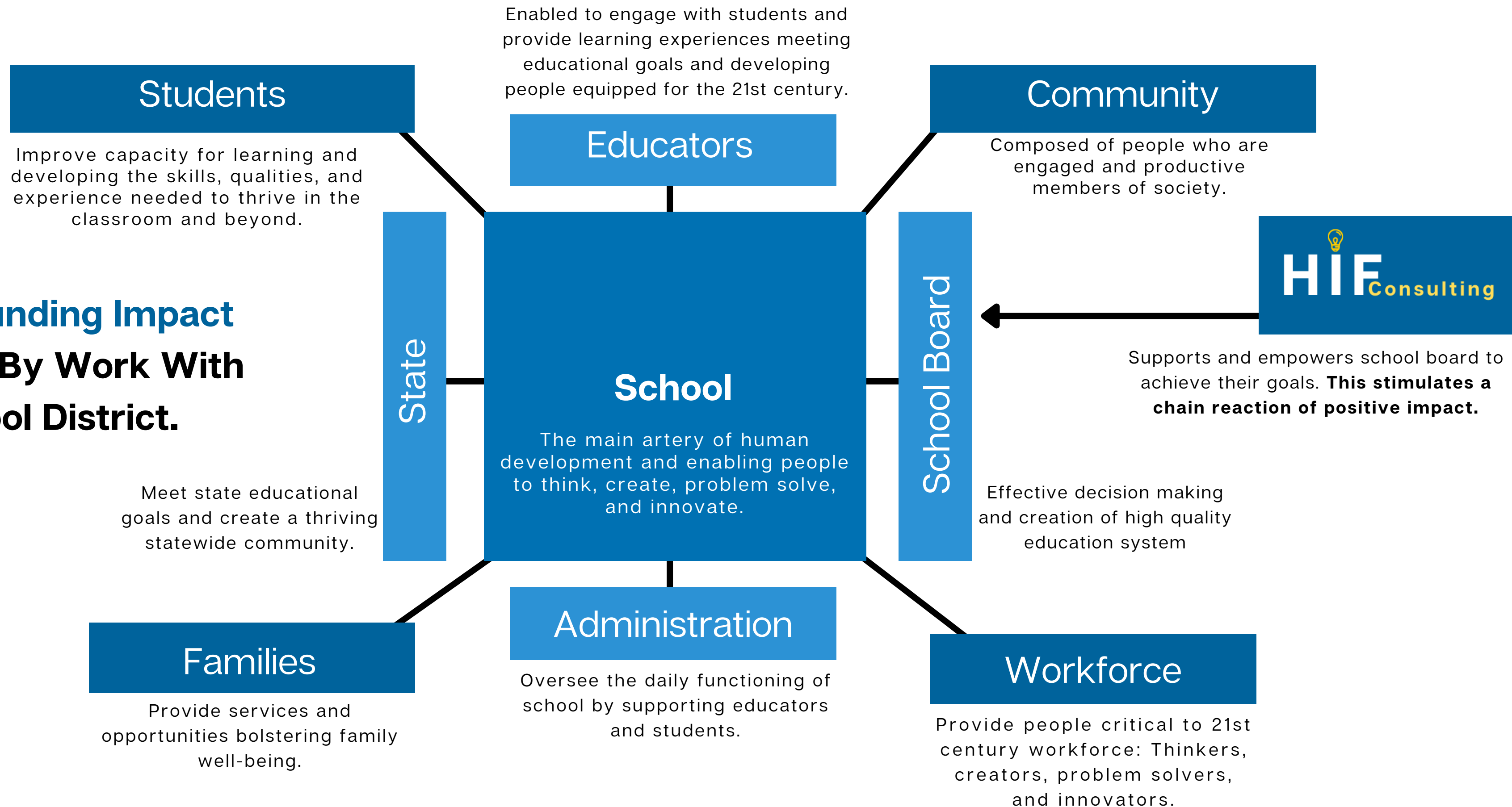


SUSTAINABLE

Following HIF Consulting's Process Will Help Waterville Achieve Sustainable Impact and Results Enriching The Lives of Visitors and Community Members.



Compounding Impact Created By Work With School District.




Providing Critical Support.

"Dylan fills a critical role for our team. He helps provide structure and guidance to our decision-making process. He has given us language in times when we were exhausted and mute, kept the ball rolling when the quagmire was so deep, and has helped our board gel as a team at critical junctures. Ultimately, because of HIF, our work is more joyful, strategic, and engaged."

MOLLY WITTERS, RIPTON SCHOOL BOARD

CUSTOM IMPACT BUNDLES

HIF provides access to our entire ecosystem of impact platforms. Each is a tool we can utilize depending on the specific needs of your project. A few examples include



THEORY OF SUSTAINABLE SOLUTIONS

HIF's theory of sustainable solutions is applied as a framework to deconstruct challenges and build actionable strategies leading to positive outcomes. It is the core of HIF's work. We use it as both a guideline and a mechanism steering decision making.

HUMAN DEVELOPMENT

We provide our experience in education and innovative approaches to human development to evaluate and produce effective trainings and workshops enhancing team performances. This includes training in our Engage, Think, Act model and leadership coaching.

ACTIONABLE RESEARCH

We use HIF's think tank Actionable Research to efficiently evaluate, analyze, and conduct research in order to drive development of sustainable strategies.

Dylan Patrick

Creative Problem Solver and Founder of Holistic Impact Foundation, a nonprofit working to create scalable impact by empowering people and enriching communities.

High School

*New Hampton
School, 2004*

University

*College of
Wooster, 2008*

B.A. History

Staff Reporter
Wooster Voice

Research Projects

**Examining
Benedict Arnold**

**Mongolian Illegal
Wildlife Trade**

**Evolution of
Organized Crime**

Education Work

Gilmanton
Elementary
School,
Gilmanton NH

GAC Educational
Services,
Qingdao China

NH Teen Institute,
13 Years of
Volunteering

Holistic Impact Foundation

Development and Launch
of Curious Cottage
Preschool

Creation of unique human
development and Engage,
Think, Act Model

Selected to conduct multi-
year community
development project in
Waterville Valley, NH.

Every Challenge Is An Opportunity
To Make A Difference.

Dylan Patrick, Founder
Holistic Impact Foundation

**BEHIND
HIF CONSULTING
IS A UNIQUE
NONPROFIT.**

HIF Consulting is one of several impact platforms offered by **Holistic Impact Foundation** (HIF). HIF is a human and community development nonprofit. Our mission is to create scalable impact by empowering people and supporting communities through education, research, consultancy, and media platforms. Our mission is essential to generating sustainable solutions to challenges of our lifetime.

Each of HIF's impact elements is designed for different markets, but they all incorporate various formats of human development.

Incorporating HIF's Engage, Think, Act model and optimizing training models, we help develop thinkers, creators, problem solvers, and innovators. People empowered and inspired to break barriers and maximize their potential in school, work, and life.

CONTACT US.

HIF HEADQUARTERS 40 Winter St. Room 301 Rochester, NH 03867

PHONE NUMBER 603 822 4641

EMAIL ADDRESS dylan@holisticimpactfoundation.org

WEBSITE www.holisticimpactfoundation.org