

Vermont Migrant Education Program Demographics

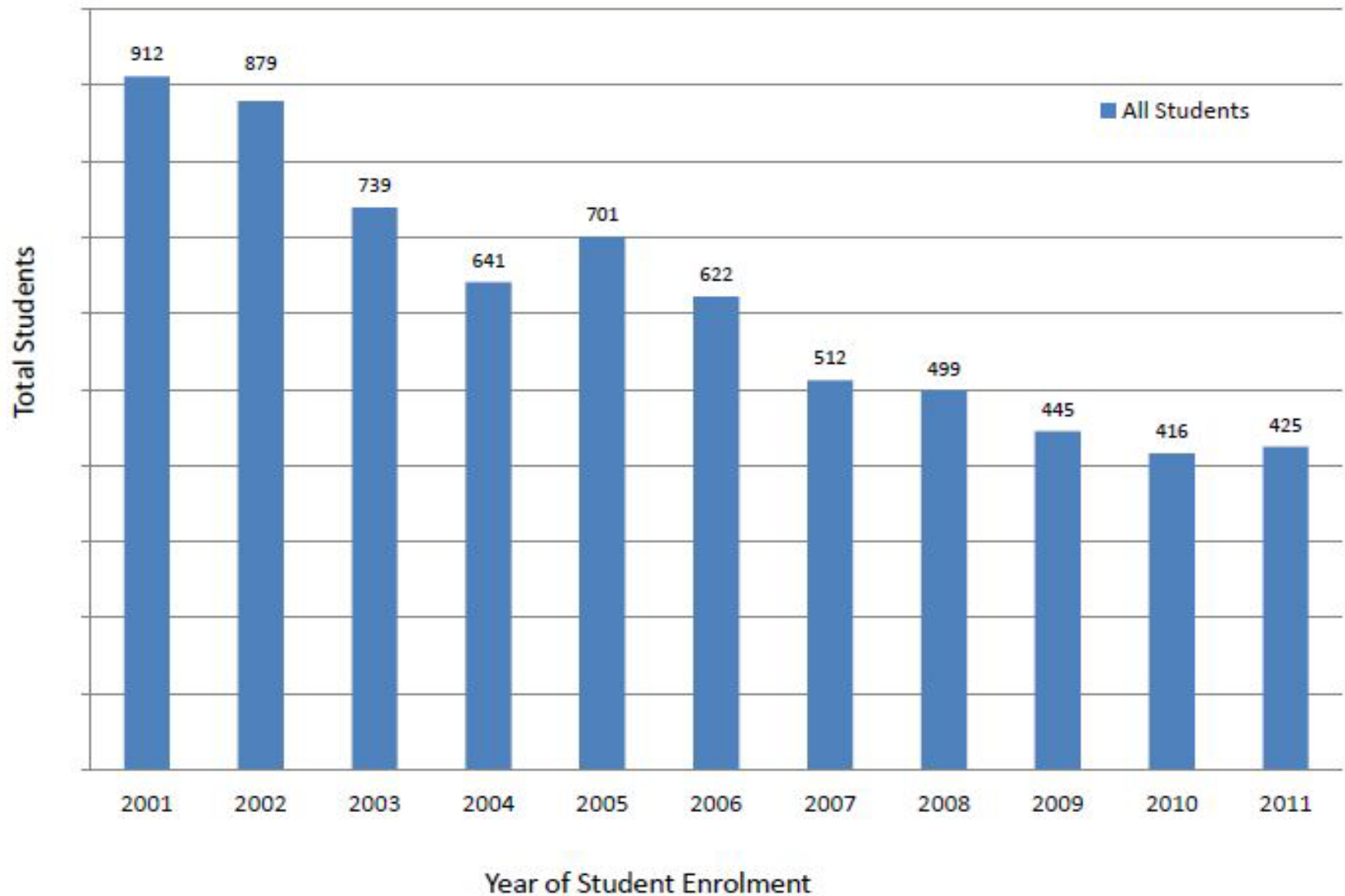




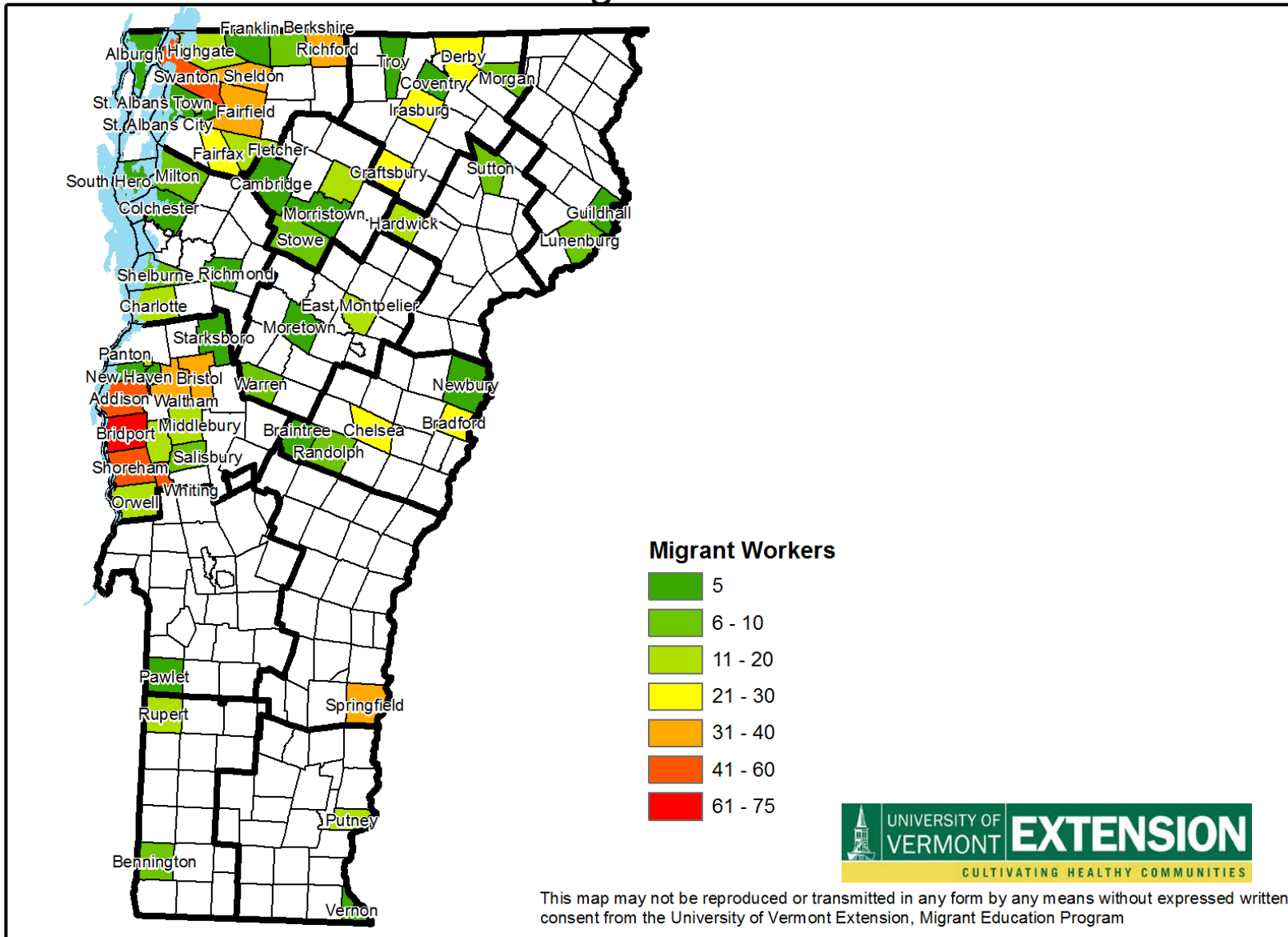
Vermont Migrant Education Program General Student Population Data

- VT annually serves between 400-500 students statewide
- VT serves 2 different characteristics of students
 - ❖ Children of farmworkers PK-12
 - English Speaking students
 - Spanish Speaking students
 - ❖ Out of School Youth (OSY) Spanish speaking farmworker youth
- Qualifying Agricultural Work
 - 90% Dairy farming
 - 4% Logging
 - 3% Processing
 - 3% Vegetable & Apples & Greenhouse work
- 55% of VMEP total student population are Spanish speakers

Total Vermont MEP Child Count 2001-2011



March 2010 Estimated Population Distribution of Vermont Migrant Farmworkers

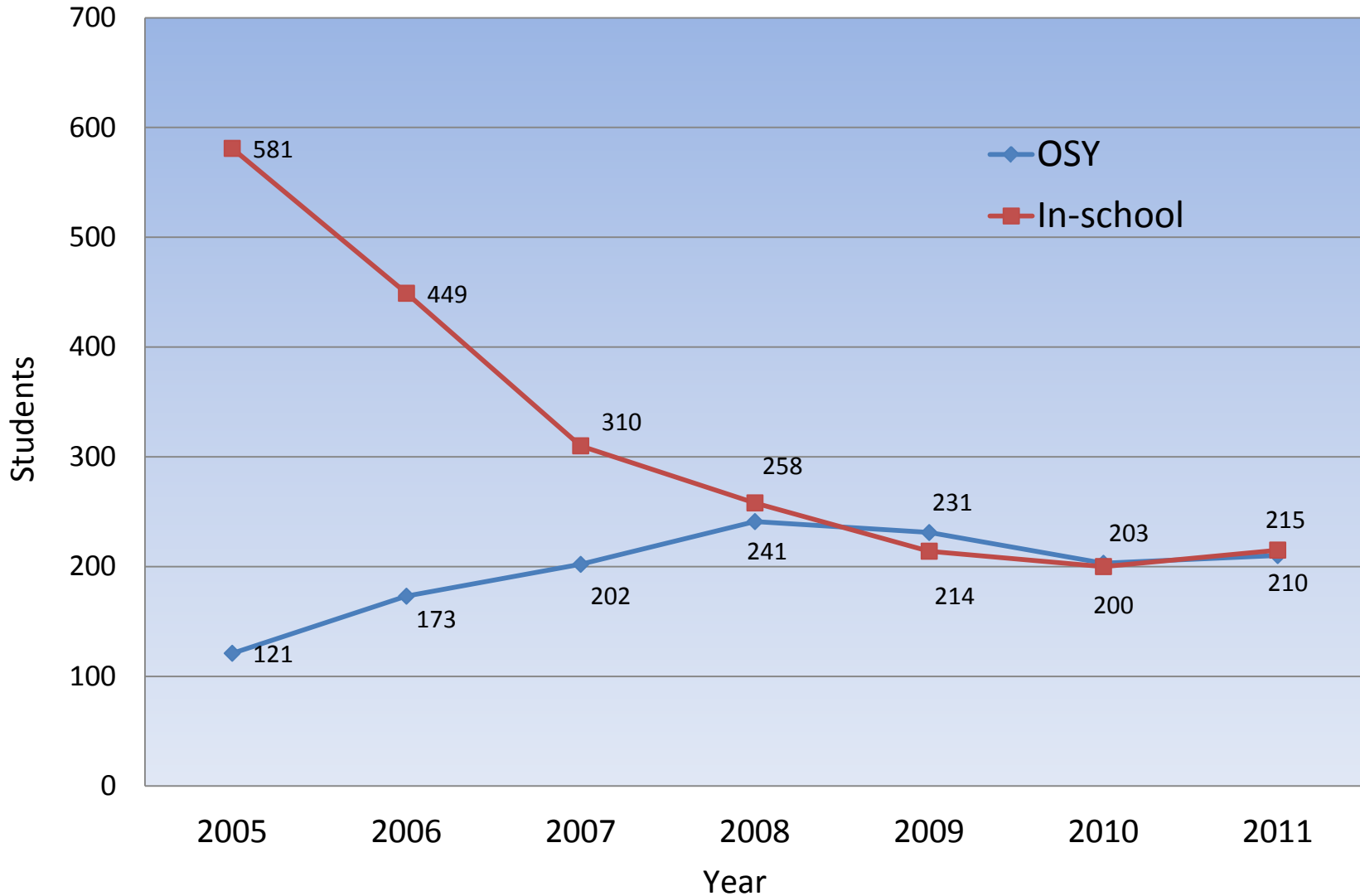


This map may not be reproduced or transmitted in any form by any means without expressed written consent from the University of Vermont Extension, Migrant Education Program

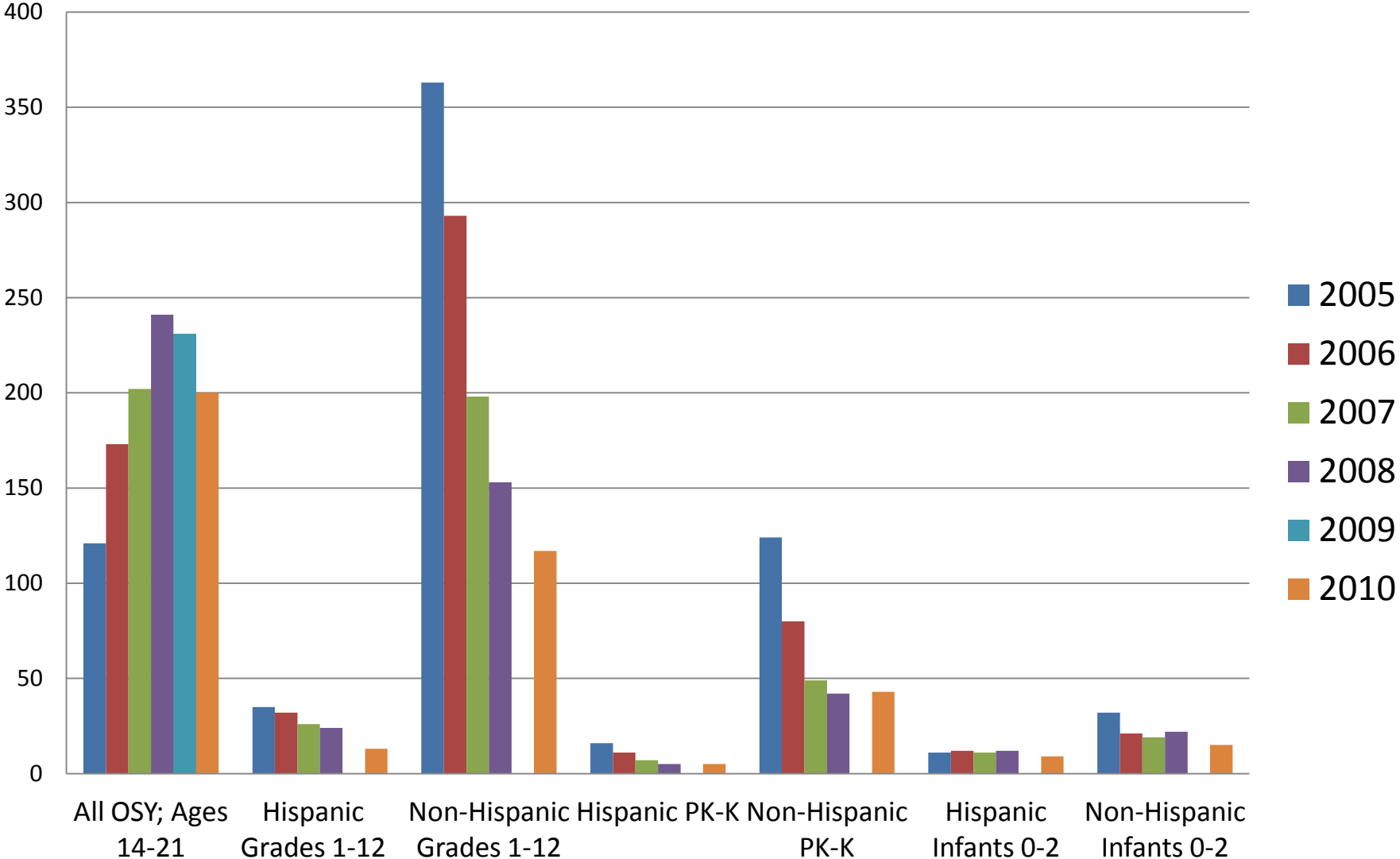


MEP Student Classification 2005 – 2011

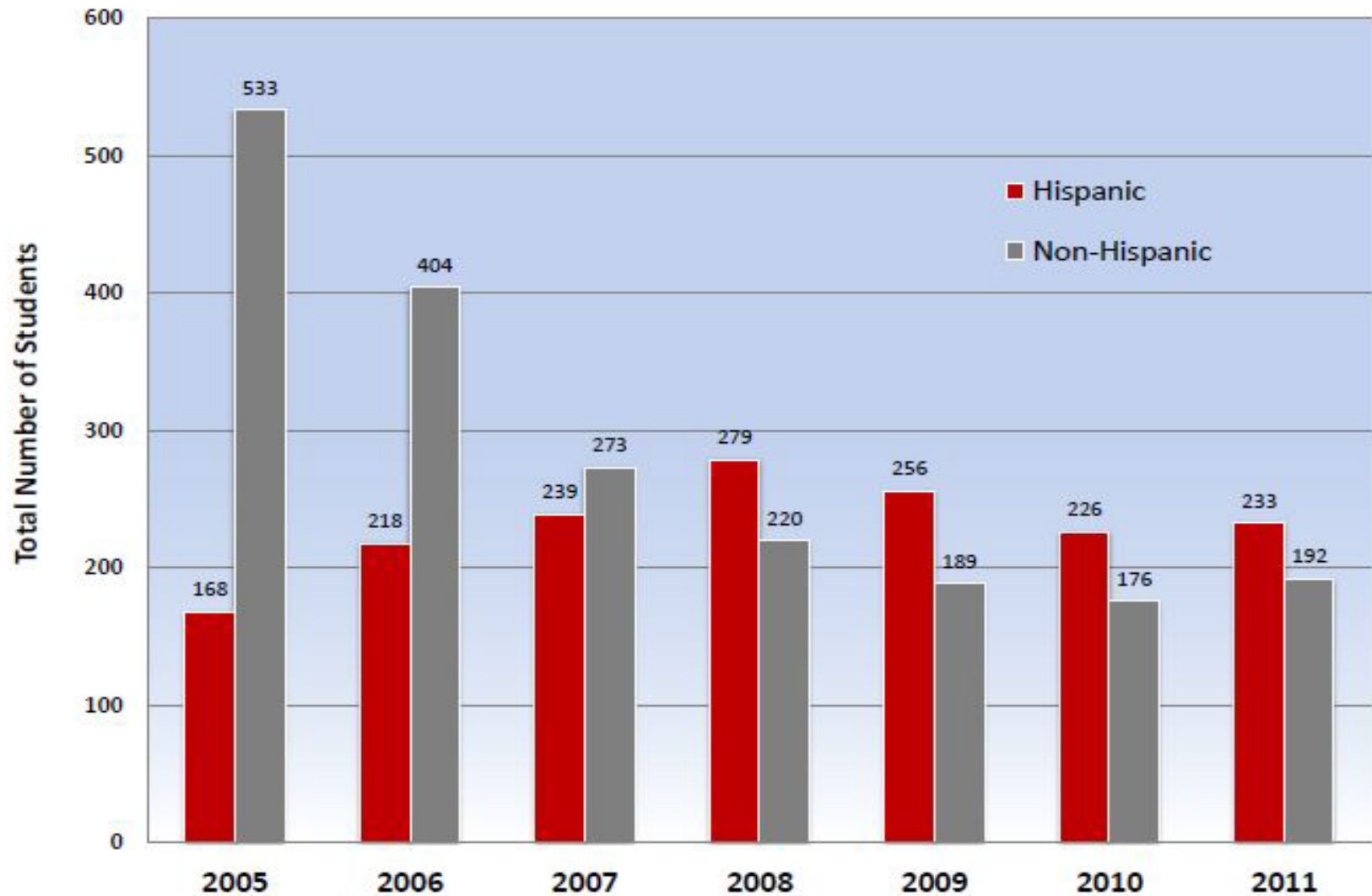
Out of School Youth vs. In-School



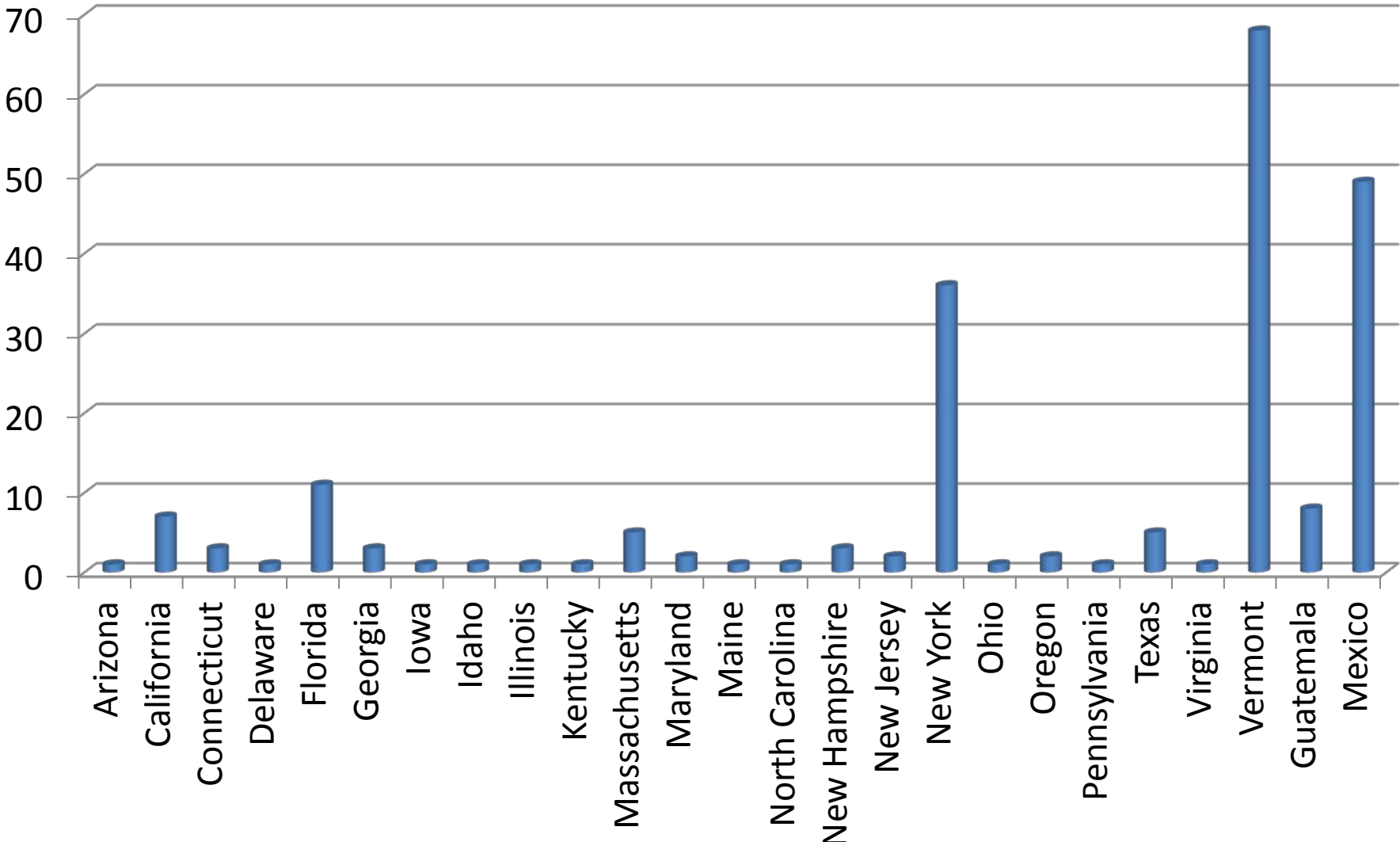
Total MEP Students Statewide 2005 - 2010



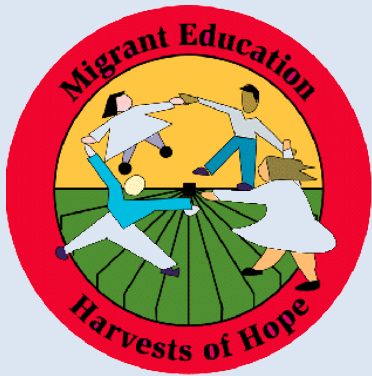
MEP Student Ethnicity 2005 - 2011



Where do VT MEP students move from?



*Note moved 'from' signifies last qualifying move



Vermont MEP General Population Data Out of School Youth (OSY)

- 97% originally come from Mexico, primarily from the states of:
 - Chiapas (39%)
 - Veracruz & Tabasco (16%)
 - Guerrero (12%)
 - Oaxaca (6%)
 - *Other MX States* (11%)
- Average level of education completed in home country is between 6-9th grade
- Approximately 9% of OSY's first language is an indigenous dialect
- 11% of OSY farmworkers are female

Mexico



