

AISNE Accreditation Program

Presenters:

Claire Leheny, Executive Director, AISNE

Sara Wilson, Director of Accreditation, AISNE

About AISNE

The [Association of Independent Schools in New England](#) (AISNE) is a non-profit membership association of 260 independent schools across New England and an accrediting organization for Kindergarten - Grade 8 independent schools.

For more than 50 years, AISNE has been an accreditation leader and currently accredits 79 of our member schools.

Historically, NEASC has accredited private schools in New England that include high school, while AISNE has accredited the independent elementary and middle schools in the region.

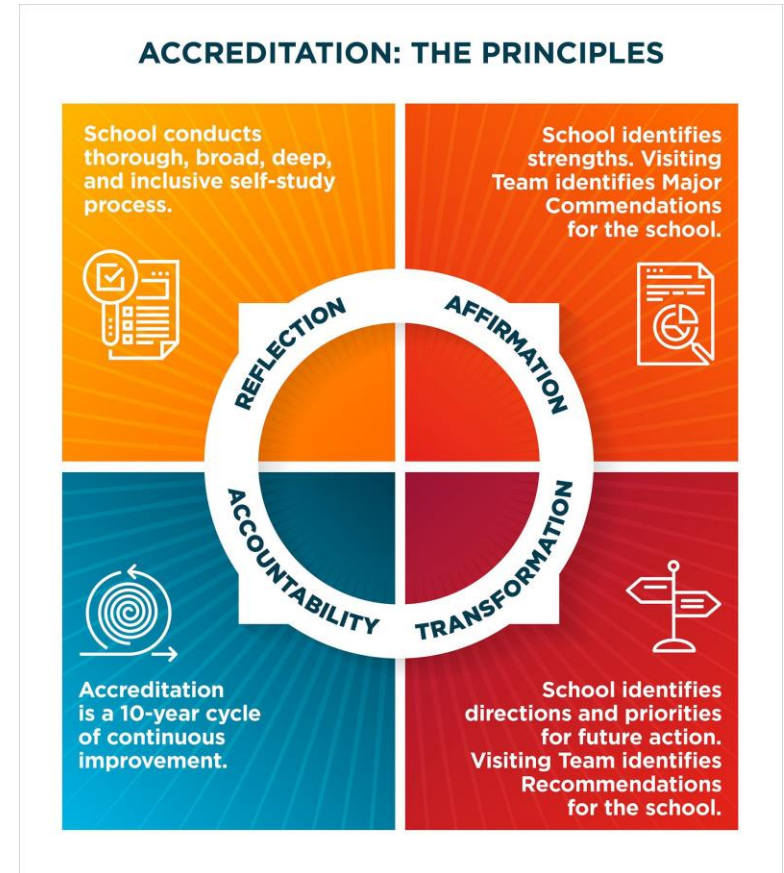
A list of AISNE member schools can be found [here](#).

AISNE Mission Statement

With an ongoing commitment to equity and inclusion, the Association of Independent Schools in New England (AISNE) shapes the educational landscape for independent schools through leadership, education, service, and strategic advocacy.

AISNE school accreditation is a multi-year, standards-based process that involves rigorous self-study and a multi-day peer-review onsite visit.

AISNE is accredited by:



Benefits of AISNE Accreditation

- Facilitates institutional self-reflection, goal setting, and continuous improvement:
 - Strengthens a school's commitment and congruence to its **mission**;
 - Requires self-reflection and **self-evaluation**;
 - Affirms the school's **strengths**;
 - Identifies **areas for improvement**;
- Provides quality assurance and accountability:
 - Requires the school to compare its performance to **standards of good practice**, and demonstrate its **compliance with industry standards**;
 - Demonstrates the school's willingness to be held **professionally accountable**;
 - Enhances **the school's credibility** with its constituents and within the community;
 - Focuses on the institution rather than on individuals which helps to ensure the **long-term health** of the school.

The Accreditation Process

A school goes through full reaccreditation - self-study and a 4-day onsite visit - every 10 years.

An interim report and campus visit is conducted at Year 5, with Annual Reports submitted each year.

This schedule provides accountability for accredited schools and allows AISNE to monitor standards compliance and substantive changes throughout the 10-year cycle.

ACCREDITATION: THE PEOPLE

The People's role in accreditation.



Eligibility Criteria

1. Has a clear statement of mission and philosophy.
2. Consists of three or more consecutive grades in kindergarten through grade nine or equivalent.
3. Is incorporated as a not-for-profit organization as attested by federal and state records.
4. Has a non-discrimination statement as required by law.
5. Is governed by an appropriately constituted and substantially independent governing board, in accordance with the by-laws of the corporation.
6. Has policies and procedures to ensure that any perceived or actual conflicts of interest for board members are disclosed and managed appropriately.
7. Has an annual audit of the school's financial statements, performed by an independent certified public accountant.
8. Has a process for the ongoing monitoring of its compliance with all federal, state, and local legal and regulatory requirements.

Accreditation Standards

Leadership

Std. 1: Mission and Philosophy

Std. 2: Governance

Std. 3: Administration

Student Experience Program

Std. 4: Curriculum, Pedagogy, and Student Life

Std. 5: Student Well-Being

Std. 6: Program Resources

Std. 7: Residential, Homestay, and Exchange Programs (*if applicable*)

Institutional Advancement & Operations

Std. 8: Enrollment Management and Outreach

Std. 9: Community Engagement and Partnerships

Std. 10: Development

Std. 11: Staffing and Human Resources

Std. 12: Finance

Std. 13: Facilities and Grounds

Std. 14: Safety and Risk Management

Affordability of AISNE Accreditation

An independent school with < than 100 students and < than \$1m in revenue can expect to pay \$1,445 in AISNE membership dues and accreditation fees annually.

AISNE’s membership dues are based on a school’s program revenue:

From	To	Dues
-	1,000,000	1,080
1,000,000	3,000,000	1,320
3,000,000	5,000,000	1,910
5,000,000	7,000,000	2,787
7,000,000	10,000,000	3,725
10,000,000	15,000,000	5,080

An annual accreditation fee is based on enrollment:

Enrollment Bands	FY22 Fees
Under 99	\$365.00
100-199	\$494.00
200-299	\$581.00
300-399	\$715.00
Over 400	\$782.00

Thank you