

From: [Samuelson, Jennifer](#)
To: [Jennifer Oldham](#)
Cc: [French, Daniel](#); [Mary Gemignani](#); [Rob Backlund](#); [Jeanne R. Albert](#); [Abby Reynolds](#); [Tory Riley](#); [Ron Shems](#); [christie sumner](#); [MADELYN BURKE](#); [Kolbe, Tammy](#); [Sprague, Suzanne](#); [Gaidys, Maureen](#)
Subject: Re: Written input from Lincoln for 11.14.22 SBE meeting
Date: Monday, November 14, 2022 4:52:50 PM
Attachments: [Response to SBE for 11.16.22 .docx](#)
[M. Burke selected leadership and expertise FINAL.docx](#)
[LSD planning for 7.1.23-v1.xlsx](#)

Thank you for your input, Ms. Oldham. I am copying Suzanne Sprague and Maureen Gaidys on this email and will ask that your documents be included with our agenda packet for consideration by the full Board at our meeting on Wednesday.

Kind regards,

Jennifer Deck Samuelson
Chair, Vermont State Board of Education

From: Jennifer Oldham <jenontheroad@yahoo.com>
Sent: Monday, November 14, 2022 4:49 PM
To: Samuelson, Jennifer <Jennifer.Samuelson@vermont.gov>
Cc: French, Daniel <Daniel.French@vermont.gov>; Mary Gemignani <mkgemignani@gmavt.net>; Rob Backlund <robacklund@gmail.com>; Jeanne R. Albert <jalbert@middlebury.edu>; Abby Reynolds <abbywreynolds@gmail.com>; Tory Riley <onthetopofthehill@gmavt.net>; Ron Shems <rshems@tarrantgillies.com>; christie sumner <lvskatr@yahoo.com>; MADELYN BURKE <mcburke02@comcast.net>
Subject: Written input from Lincoln for 11.14.22 SBE meeting

EXTERNAL SENDER: Do not open attachments or click on links unless you recognize and trust the sender.

Dear Jennifer, attached please find our written input in advance of the SBE's November 16 meeting. The memo references three attachments, A, B and C. A and C are attached but we will not be able to provide B until tomorrow. I apologize if these documents cannot get into the Board agenda packet in time -- short turnaround time, the schedules of LSD board members, and the challenges of open meeting law conspired to make it a challenging deadline. Thank you for your understanding in this regard. Please let me know if you have any questions or difficulties opening the attached documents.

Sincerely, Jen Oldham

To: Vermont State Board of Education
From: Lincoln School District Board
Date: November 14, 2022
Subject: Input from LSD for the SBE November 16, 2022 meeting

Dear Chair Samuelson and members of the State Board of Education Board,

The Lincoln School District Board has closely reviewed the information provided to the SBE from CVSU, WRVSU, and MAUSD regarding the budgetary implications, potential for increased efficiency or greater convenience and economy, and ability to facilitate prekindergarten through grade 12 curriculum planning and coordination pursuant to 16 V.S.A. §165(a), were the Lincoln School District to join an existing, or become part of a newly formed, SU.

We appreciate the extra work each SU/District undertook to plan a budget scenario that included Lincoln while simultaneously developing budgets for their existing governance structure. We also acknowledge there is no scenario that would not face challenges.

Unfortunately, we don't feel the information provided is sufficient to undertake informed analysis or to share with our electorate. This is because a lack of consultation with Lincoln inhibited the ability to understand/clarify operating assumptions, update draft budget figures, identify potential efficiencies, consider creative solutions to challenges, and/or negotiate potentially different ways of doing business to reduce the burden of adding Lincoln to an SU. Absent collaboration, we feel the budgets are not fully informed and represent potential worst-case scenarios detrimental to all involved, including students.

We also do not have clear information on the methodologies and calculations used to arrive at the amount each SU/District is proposing to assess the Lincoln School District, how that methodology may compare to what is used for the other SU member districts, or whether these methodologies can, in fact, pass the "straight face test," as described by Superintendent Reen in the MAUSD submission.

Regardless of Lincoln's views regarding the adequacy of the information provided, what remains abundantly clear is the strident assertion on the part of CVSU, WRVSU, and MAUSD that the addition of Lincoln to their current (or a newly created) SU structure will:

1. significantly undermine efficiency, convenience, and economy of the existing/potential SU;
2. hamper, rather than facilitate, curriculum planning and coordination;
3. detract from progress made since the imposition of Act 46; and
4. create potential problems in terms of aligning collective bargaining agreements

It also seems clear that being placed with CVSU, WRVSU or MAUSD will further intensify ill-will toward Lincoln, undermining the potential for relationship-building and productive collaboration and possibly resulting in punitive, rather positive interaction, that would be detrimental to all, including students.

After the September SBE meeting, during which CVSU, WRVSU and MAUSD publicly raised their strong opposition to partnering with Lincoln and considering the SBE's strong desire not to impose Lincoln on an unwilling recipient as well as the SBE's confirmation that designating LSD a supervisory district remained a viable option, the LSD Board was compelled to actively re-examine being an SD, despite its previously articulated concerns. With the participation of experienced education consultant, LSD has now determined that:

1. the work begun by Lincoln when it was planning to create an SU with Ripton, and which has continued under the assumption it would manage some central office services regardless of where it was assigned, has kept Lincoln on track to being not only a fully operational district, but a fully operational supervisory district by July 1, 2023
2. Lincoln will be able bear the financial cost alone to become an SD due to a successful private fundraising campaign, revised budget projects, and the identification of flexible financing models;
3. designating LSD as its own SD is clearly the most cost-effective, viable option remaining for the provision of SU services, relative to the other possible options, and will "...afford increased efficiency" and "greater convenience and economy."

To help Lincoln make this determination and to guide the effort of LSD becoming a supervisory district, LSD has hired a highly qualified consultant with 45 years of experience in public school education, 37 years in VT, with both Superintendent and Special Education credentials. (See attachment for key experience of Madelyn Burke). LSD also continues to work with former supervisory district business manager and finance manager, Brittany Gilman, to support all aspects of district/SD budget planning and modeling, as well as evaluation of potential options for purchased services. Other important elements in place include:

1. an FY24 budget that continues to be refined and continues to reflect the ability of Lincoln to support the cost of being its own SD. (Attachment B);
2. assurances from banks of our ability to borrow funds to cover transition costs not covered by private fundraising;
3. approval from the District's electorate to raise and spend money, and a plan to hold a vote for additional spending approval in January 2023;
4. full-support of the vast majority of the teachers and administrative staff of the Lincoln Community School to remain with LCS;
5. ongoing communication with the VTNEA to ensure compliance with Act 176 Section 11
6. an implementation plan for the essential elements required to be a fully functional SD by July 1, 2023, which continues to be revised/updated as necessary. (Attachment C);
7. confidence the current labor market can provide well-qualified candidates who are interested in part-time work that offers flexibility in terms of both location and schedule; and
8. a diverse Advisory Council comprised of individuals with direct experience in Vermont school governance, regulations, curriculum development, special education, etc., who have been and remained committed volunteers to support Lincoln's efforts.

Our conclusion, which has unavoidably evolved over the last five months based on new information as it unfolded, is that designating the Lincoln School District its own Supervisory District is not only the most efficient, convenient, and economical solution, it has the least potential for negative impact on students, taxpayers, other SUs/Districts, and the State Board of Education, while ensuring Lincoln students have access to the quality of education and services required by the State of Vermont. If there is one thing all parties can agree upon, maximizing student educational opportunities is our ultimate goal.

Given the immense amount of work on the part of all parties during the last five months, the need to finalize budgets, and the need to focus energies on preparedness for July 1, 2023, we hope the State Board of Education will act at its November 16, 2022 meeting to designate the Lincoln School District as its own Supervisory District.

Sincerely,

Jennifer Oldham

On behalf of the Lincoln School District Board

Madelyn Burke
Mendon, VT
802-558-1828

Education Leadership

- Special Services Director, SAU 75, Grantham, NH 2018 - 2022 (retired)
- Special Education Director, Croydon School District, NH 2017 - 2018
- Assistant Superintendent for Pupil Services, Windsor Southeast SU 2005 - 2012
- Director of Student Services, Windsor Southeast Supervisory Union 2003 - 2005
- Director of Student Services, Rutland Central SU 1998 - 2003
- Director of Student Services, Addison-Rutland SU 1996 - 1998

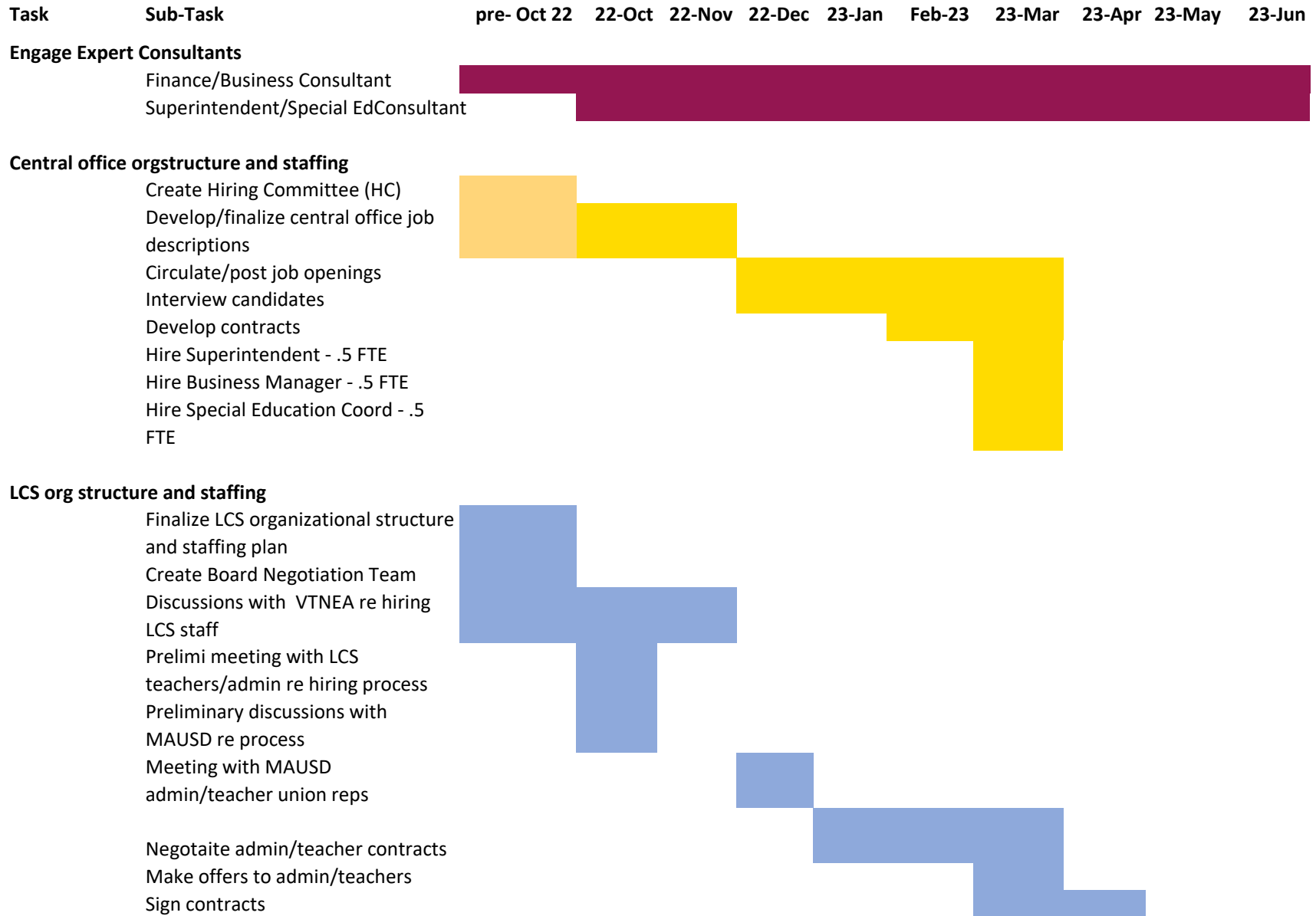
Select Expertise and Experience

- Vermont licensed superintendent, 2005 - 2012
- Federal grants/programs management and compliance
- MTSS development in alignment with IDEA
- Curriculum coordination
- Organizational restructuring
- Budget development and fiscal
- Staff supervision and evaluation
- Title 1 coordinator
- Data analysis

Education Training

- VELA – Vermont Education Leadership Alliance 2004-2005
- Snelling Institute – Vermont Leadership Project 2000-2002
- M.Ed. Special Education/Administration, University of Vermont 1996
- B.S. Education, Southern Connecticut State College, 1994

Lincoln School District planning for 7.1.23



Financing



Special Education



Transportation



Food Service



Negotiate food service contract
 Sign food servcie contract



Task **Sub-Task** **pre- Oct 22** **22-Oct** **22-Nov** **22-Dec** **23-Jan** **Feb-23** **23-Mar** **23-Apr** **23-May** **23-Jun** **Jul-22**

Adoption and implementation of policies and procedures

Transfer of student individual educational plans (IEPs) and student records

Financial administration and operations

Review and verify compliance with EQS  on-going

professional development

Create professional development committee
 Create professional development budget
 professional development data

Faciliities Management

Hire facilities consultant

i

Task **Sub-Task** **pre- Oct 22** **22-Oct** **22-Nov** **22-Dec** **23-Jan** **Feb-23** **23-Mar** **23-Apr** **23-May** **23-Jun** **Jul-22**

Tuitioning out Gr 7-12

Analyze Options - Designation v Full Choice
 Send information and survey to residents for input



Finalize tuition out policy



Tuitioning into LCS

Develop tuition cost

Analyze cost/benefit of different options to receive students, use sliding scale, etc.

Finalize tuition out policy

