

Provision of Supervisory Union Services to the
Lincoln School District
Vermont State Board of Education
November 16, 2022

Procedural Background

- SBE approved Lincoln's request to withdraw from the MAUSD pursuant to the former version of 16 V.S.A. §724 and reconstituted the LSD on May 18, 2022. Pursuant to the former version of §724, Lincoln's withdrawal shall be fully effective on July 1, 2023.
- At SBE meeting on September 28th, the Board spent over three hours hearing from LSD and several SUs/SDs regarding how best to provide supervisory union services to it. No good options emerged, and it was clear that information was missing.
- At the end of September 28th meeting, SBE identified five possible options and requested additional information from CVSU, WRVSU, MAUSD, and LSD, as well as a recommendation from the AOE.
 - One of those options (forming an SU with Ripton) is no longer under consideration as Ripton voted to rejoin the ACSD
- Responses have been collected and included in the agenda packet. Public comment has been collected and included as well.

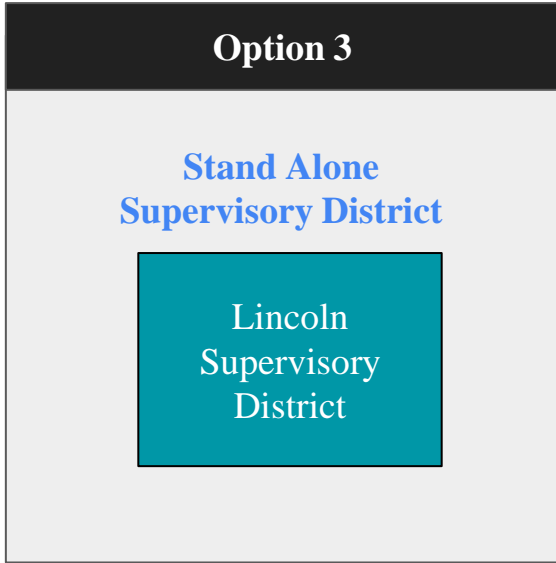
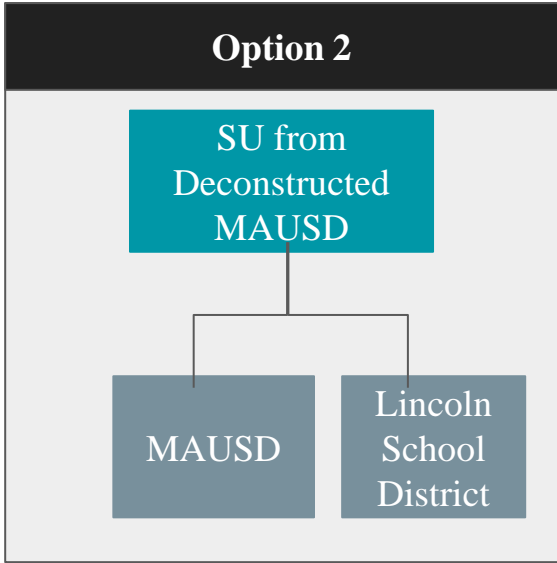
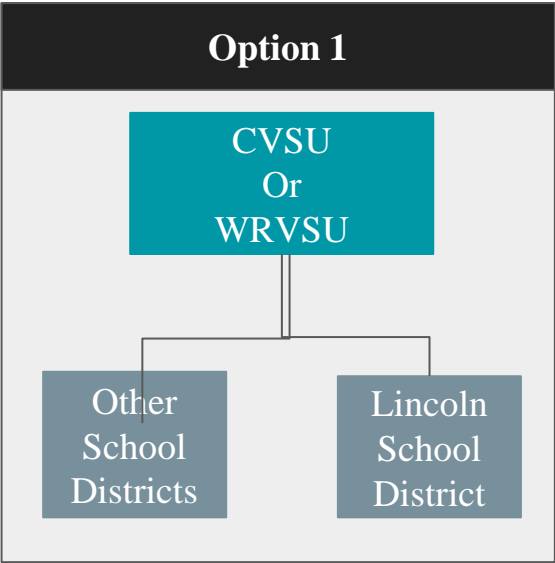
State Board's Role in Governance Configuration

- The State Board is responsible for determining supervisory union configurations
 - Creating and dissolving supervisory unions
 - Assigning and reassigning school districts to existing supervisory unions
 - Declaring school districts to be supervisory districts (an SU that is made up of one school district, which may be a unified union district)
- The State Board has broad discretion in the exercise of its authority with respect to supervisory union configuration, including conditional provisions

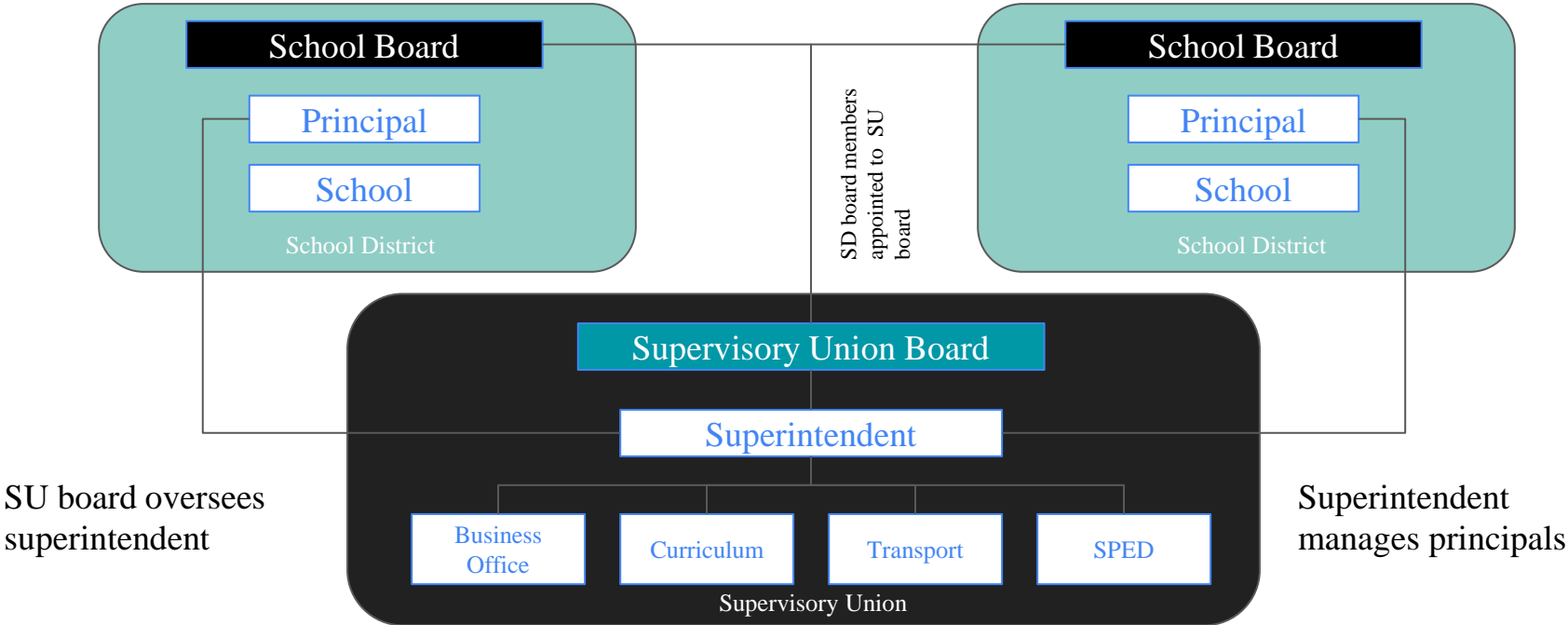
Remaining Options for Consideration

- Assign LSD to CVSU
- Assign LSD to WRVSU
- Deconstruct MAUSD and assign LSD to newly created SU
- Designate LSD at its own single-district SD

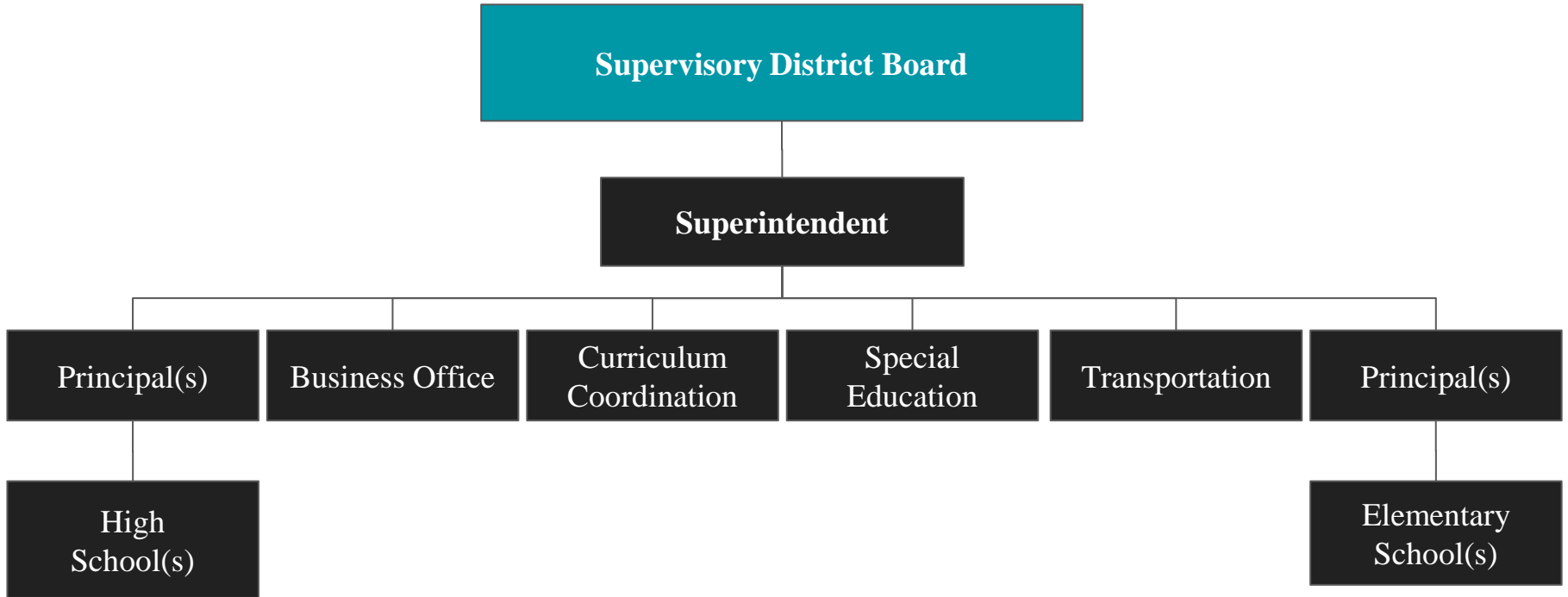
Potential SU/SD Configuration Options



Typical Structure for a Supervisory UNION



Typical Structure for Supervisory DISTRICT



16 V.S.A. §261

- §261(a) provides the SBE with broad authority to regroup SUs or create new SUs in such a manner as to:
 - Afford increased efficiency OR greater convenience and economy; AND
 - Facilitate PreK - Grade 12 curriculum planning and coordination
- §261(c) allows the SBE to designate any school district, including a unified union district, as an SD if it:
 - Will provide for the education of all resident students in PreK - Grade 12; AND
 - Is large enough to support the planning and administrative functions of an SU.

16 V.S.A. §261a

- §261a(a) lists duties required of each SU Board, including with regard to:
 - Curriculum
 - Receiving and disbursing federal and State funds
 - Providing professional development opportunities to teachers, administrators and staff,
 - Providing special education services,
 - Employing staff qualified to provide financial and student data management services,
 - Providing resources to handle matters such as distribution of goods and services, construction projects, transportation of students, and teacher contract negotiations, and
 - Adopting truancy policies
- §261a(b) encourages SUs to reach agreements with other SUs jointly to provide any services or perform any duties under this section in order to promote the efficient use of financial and human resources.

Discussion

- AOE recommends and LSD requests that the SBE designate LSD as its own SD under 16 V.S.A. §261(c)
- The data and analysis provided by the AOE, CVSU, WRVSU, and MAUSD under 16 V.S.A. §261(a) show little, if any, gains in efficiency or convenience and economy, and all four reports highlight challenges to PreK-Grade 12 curriculum planning and coordination that would occur if LSD were assigned to CVSU, WRVSU, or MAUSD
- What is best for students and the State?